

PLANS FOR
SANITARY SEWER REHABILITATION
BASIN 5 INTERCEPTOR AND
POLK BAYOU DOUBLE SIPHON

FOR THE CITY OF
BATESVILLE, ARKANSAS

MWY PROJECT NO. BA-138B5I
AUGUST 2012



JAMES C. ULMER
ARKANSAS REGISTERED PROFESSIONAL ENGINEER NO. 4691



McGoodwin Williams & Yates
Engineering Confidence
© 2012 Fayetteville, Arkansas



JEFF L. RICHARDS
ARKANSAS REGISTERED PROFESSIONAL ENGINEER NO. 6185

FURNISH AND INSTALL 24"x4" W/FE WITH FLOOR AND MARGIN IN THESE LINE LOCATIONS. LOCATION TO BE FIELD DETERMINED BY ENGINEER DURING CONSTRUCTION.

MANHOLE #2
CONSTRUCT 3' DIA. MH
STA 3+40
INV. 256.00

MANHOLE #4
CONSTRUCT 5' DIA. MH
WATER TIGHT RING AND LID
STA 7+77
INV. 255.00
CONSTRUCT AROUND
EXISTING 6" SEWER LINE
EXISTING 8" SERVICE LINE
TO REMAIN IN SERVICE
THIS CONTRACT.

REMOVE AND REPLACE CURB AND UTILITY SEE STREET CROSSING DETAIL 5/01

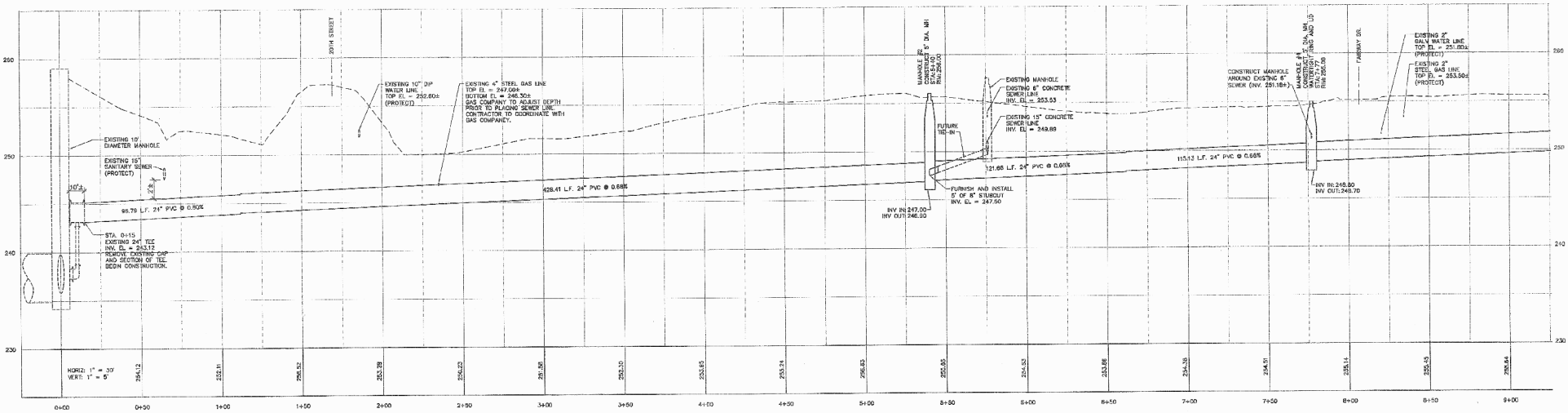
REMOVE COTTONWOOD TREE AND REPLACE CURB AND UTILITY AS NEEDED - APPROX. 35 LF.

REMOVE AND REPLACE POLE WALL DAMAGED DURING CONSTRUCTION



THE LOCATIONS OF EXISTING UNDERGROUND UTILITIES SHOWN ARE APPROXIMATE BASED ON THE BEST INFORMATION AVAILABLE AND MAY NOT REFLECT ALL EXISTING UTILITIES IN THE PROJECT AREA. THE CONTRACTOR IS RESPONSIBLE FOR COORDINATING WITH THE UTILITY COMPANIES FOR LOCATING EXISTING UTILITIES PRIOR TO CONSTRUCTION AND FOR PROTECTION OF SERVICES DURING CONSTRUCTION.

- NOTES:
1. INSTALL WYES FOR 4" SERVICE LINES AS DIRECTED ALONG 24" SEWER AND WHERE EXISTING SERVICE IS FOUND.
 2. EXISTING 10" AND 15" CONCRETE SEWER LINES FROM PUMP STATION TO STATION 17+33 WILL BE ABANDONED AT A LATER DATE (NOT THIS CONTRACT).



REV.	DATE	BY	DESCRIPTION



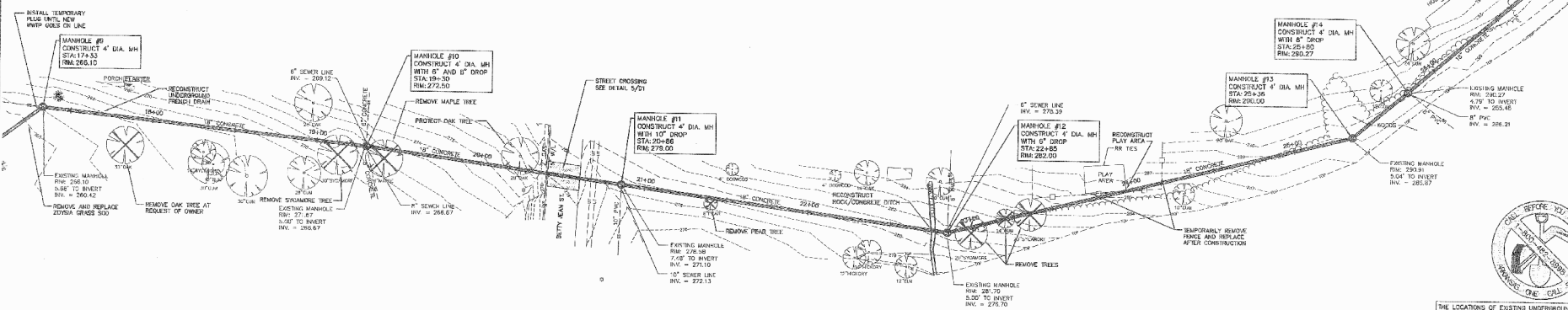
DESIGNED: RC
DRAWN: ELU
PROJECT NO.: BA138B51
McGoodwin Williams & Yates
Engineering Confidence
© 2012 Fayetteville, Arkansas

SANITARY SEWER REHABILITATION
BATESVILLE, ARKANSAS
BASIN 5 INTERCEPTOR
STA. 0+00 TO 9+00
SHEET NO.: C1

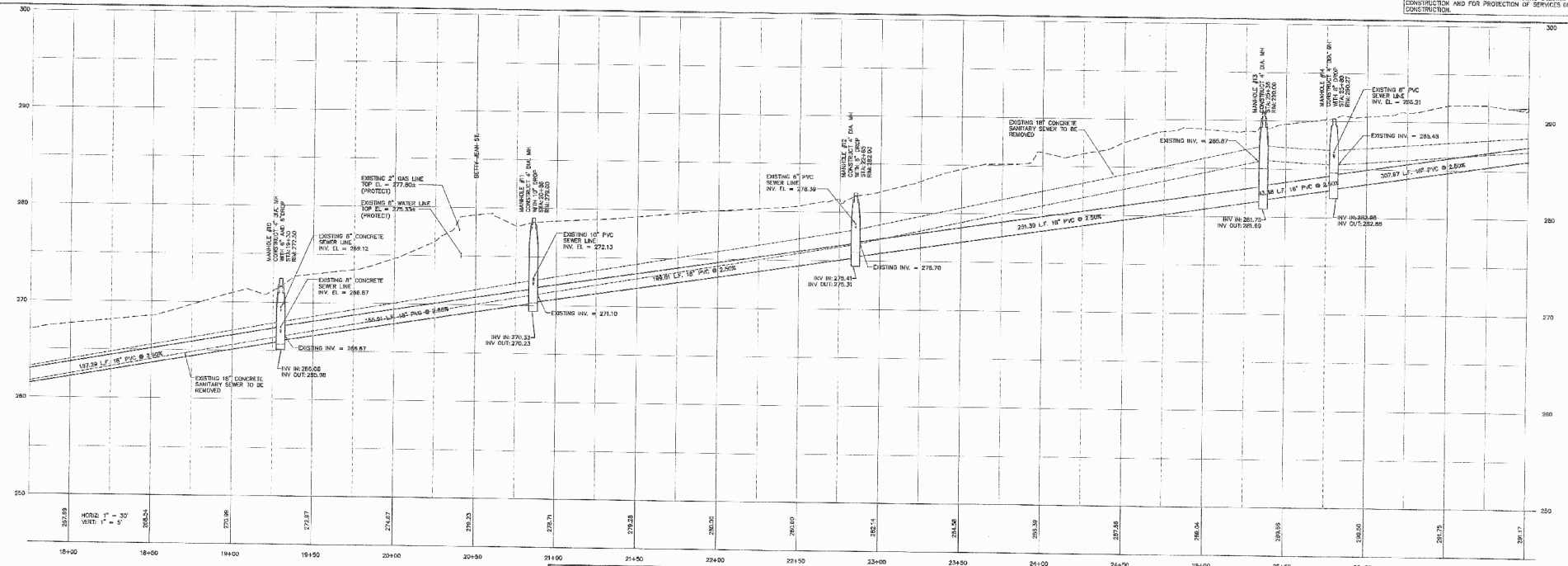
1: (DRAWN) MARYPATRICK@MWH.COM; 2: (CHECK) JAMES C. WILLIAMS; 3: (ENGINEER) JAMES C. WILLIAMS; 4: (DATE) 11/15/11



RELOCATE DURING CONSTRUCTION
COORDINATE WITH OWNER

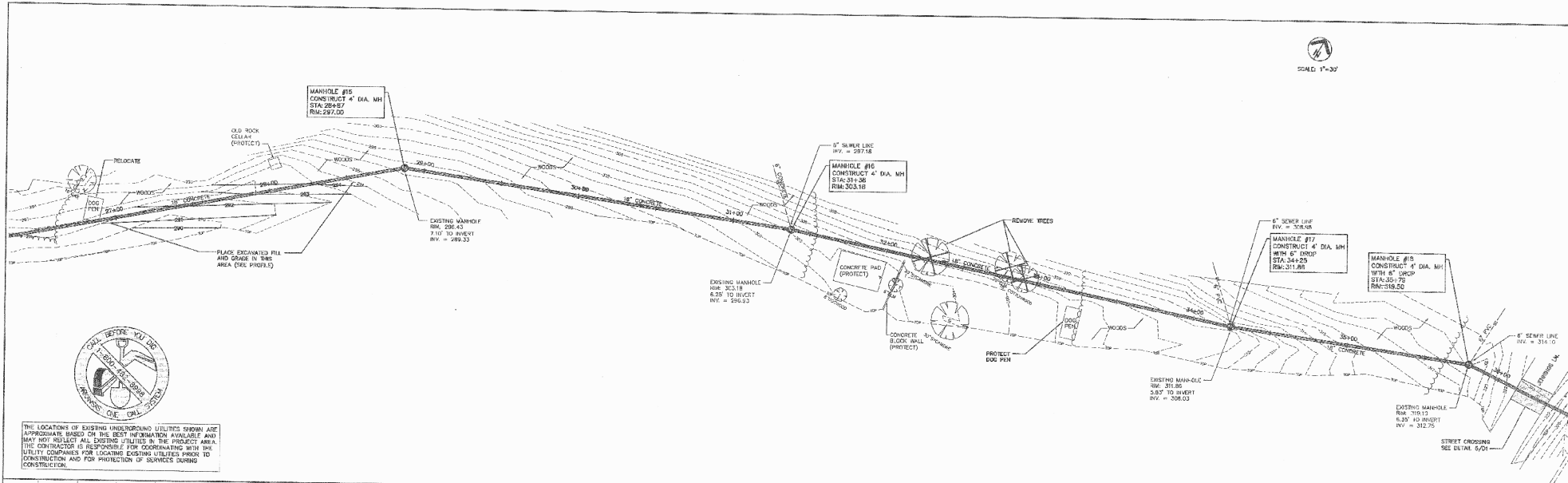


THE LOCATIONS OF EXISTING UNDERGROUND UTILITIES SHOWN ARE APPROXIMATE BASED ON THE BEST INFORMATION AVAILABLE AND THE CONTRACTOR IS RESPONSIBLE FOR COORDINATING WITH THE UTILITY COMPANIES FOR LOCATING EXISTING UTILITIES PRIOR TO CONSTRUCTION AND FOR PROTECTION OF SERVICES DURING CONSTRUCTION.

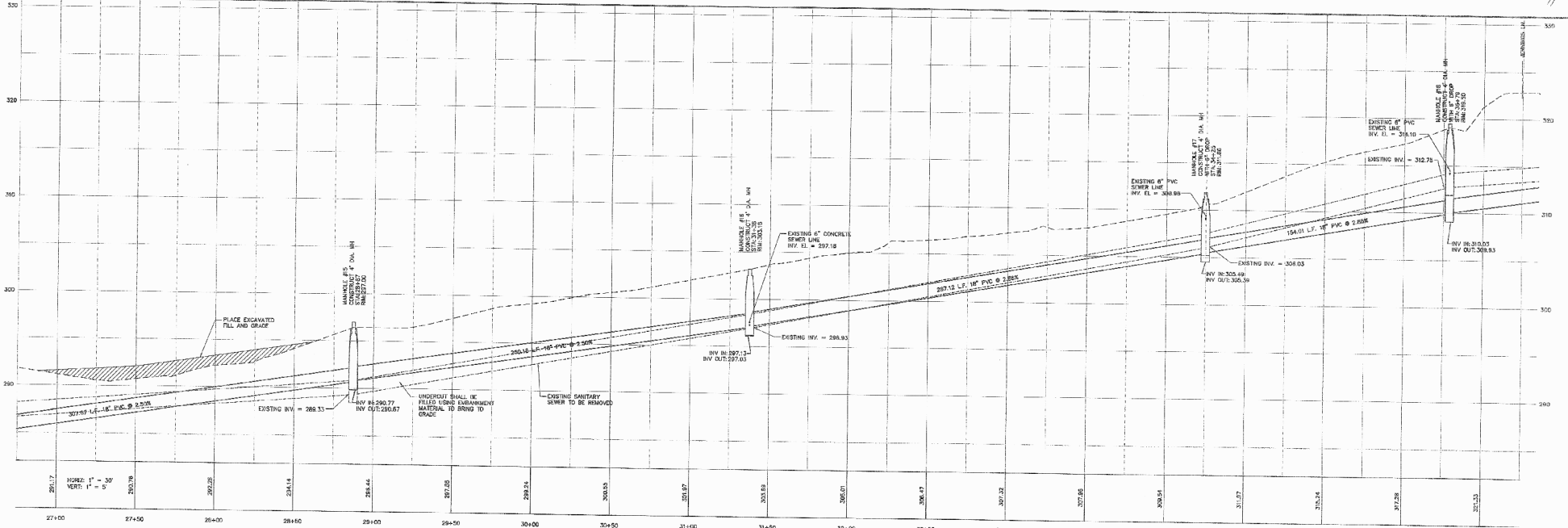


REV DATE BY DESCRIPTION			DESIGNED: RC CHECKED: FLH DRAWN: FLH		SANITARY SEWER REHABILITATION BATESVILLE, ARKANSAS BASIN 5 INTERCEPTOR STA. 18+00 TO 27+00	SHEET NO. C3
			PROJECT NO. BA138B51			

X:\Batesville\Batesville\201705_C132_Plan_C3_BASIN5_INTERCEPTOR.dwg 28/06/17

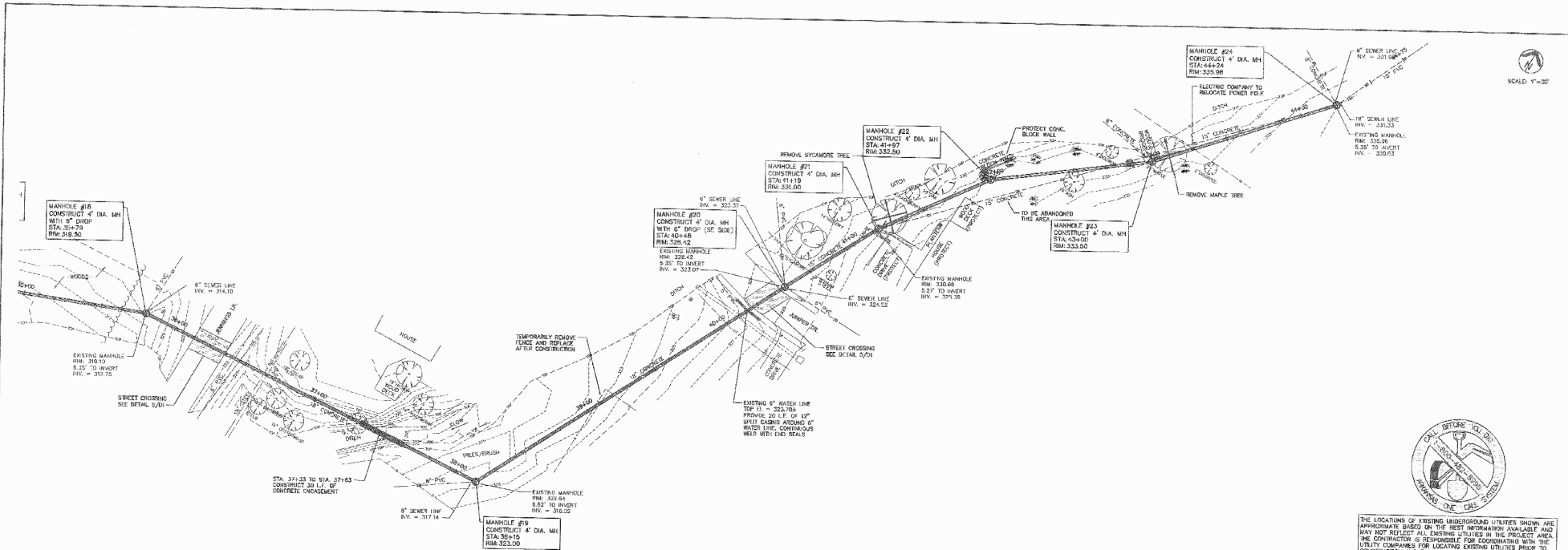


THE LOCATIONS OF EXISTING UNDERGROUND UTILITIES SHOWN ARE APPROXIMATE BASED ON THE BEST INFORMATION AVAILABLE AND MAY NOT REFLECT ALL EXISTING UTILITIES IN THE PROJECT AREA. THE CONTRACTOR IS RESPONSIBLE FOR COORDINATING WITH THE UTILITY COMPANIES FOR LOCATING EXISTING UTILITIES PRIOR TO CONSTRUCTION AND FOR PROTECTION OF SERVICES DURING CONSTRUCTION.

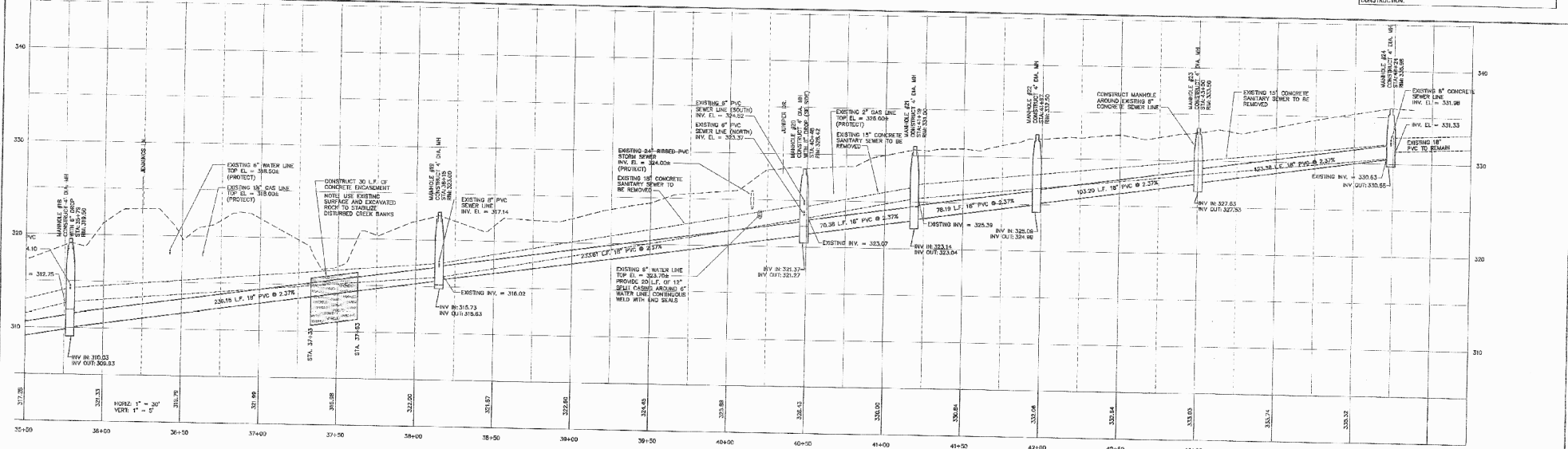


REV. DATE BY DESCRIPTION			DESIGNED: ELH DRAWN: ELH CHECKED: ELH		SANITARY SEWER REHABILITATION BATESVILLE, ARKANSAS BASIN 5 INTERCEPTOR STA. 27+00 TO 36+00	PROJECT NO. BA138B51	SHEET NO. C4
			McGoodwin Williams & Yates Engineering, Inc. <small>© 2012 McGoodwin, Williams & Yates</small>				

X:\Batesville\GIS\Batesville\27+00 to 36+00\138B51.dwg (11/11/11)

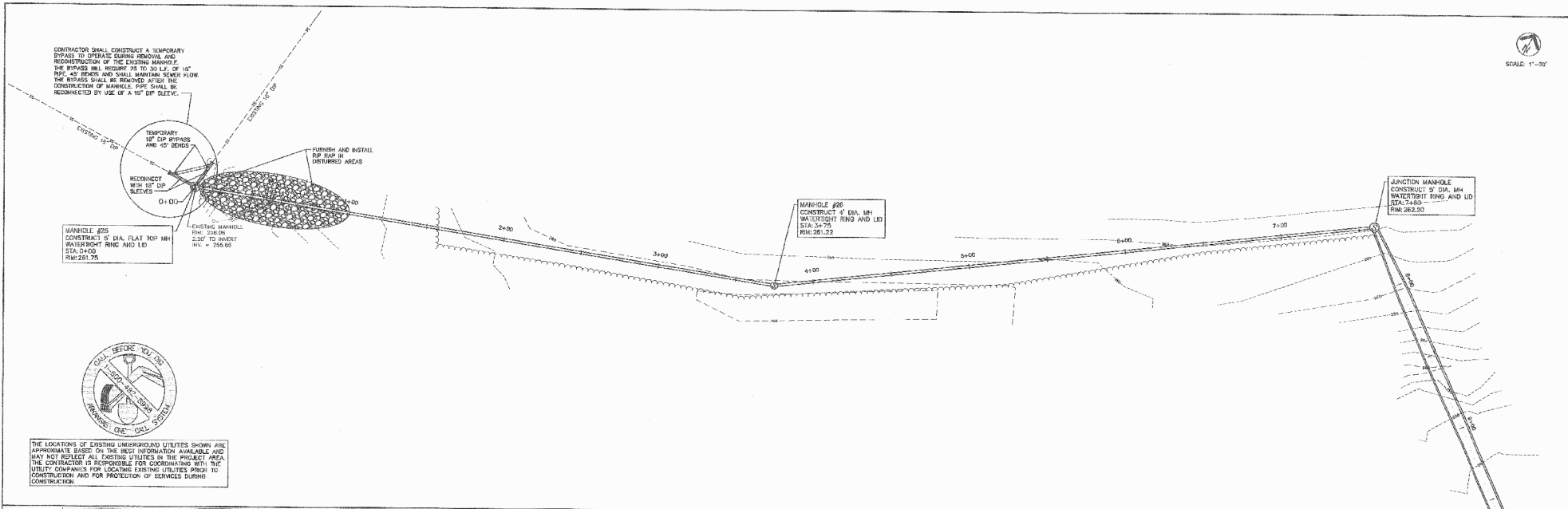


THE LOCATIONS OF EXISTING UNDERGROUND UTILITIES SHOWN ARE APPROXIMATE BASED ON THE BEST INFORMATION AVAILABLE AND THE CONTRACTOR IS RESPONSIBLE FOR COORDINATING WITH THE UTILITY COMPANIES FOR LOCATING EXISTING UTILITIES PRIOR TO CONSTRUCTION AND FOR PROTECTION OF SERVICES DURING CONSTRUCTION.

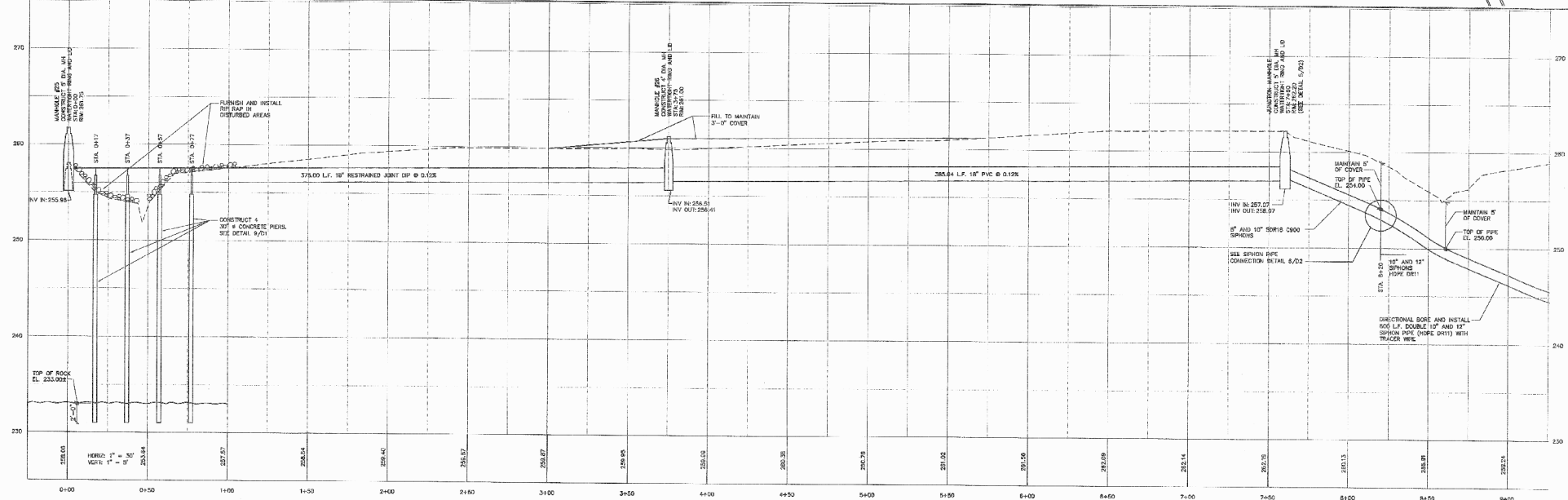


REV. DATE BY DESCRIPTION			DESIGNED BY RC	DRAWN BY ELH		SANITARY SEWER REHABILITATION BATESVILLE, ARKANSAS BASIN 5 INTERCEPTOR STA. 36+00 TO 44+24	STRUCTURE NO.
			PLANS NO. BA138B51				SHEET NO. C5

X:\PROJECTS\BATESVILLE\BATESVILLE_S5\DWG\SS\PROFILES\38138B51.PDF, REV. 04/20/11, 11:11



THE LOCATIONS OF EXISTING UNDERGROUND UTILITIES SHOWN ARE APPROXIMATE BASED ON THE BEST INFORMATION AVAILABLE AND MAY NOT REFLECT ALL EXISTING UTILITIES IN THE PROJECT AREA. THE CONTRACTOR IS RESPONSIBLE FOR COORDINATION WITH THE UTILITY COMPANIES FOR LOCATING EXISTING UTILITIES PRIOR TO CONSTRUCTION AND FOR PROTECTION OF UTILITIES DURING CONSTRUCTION.



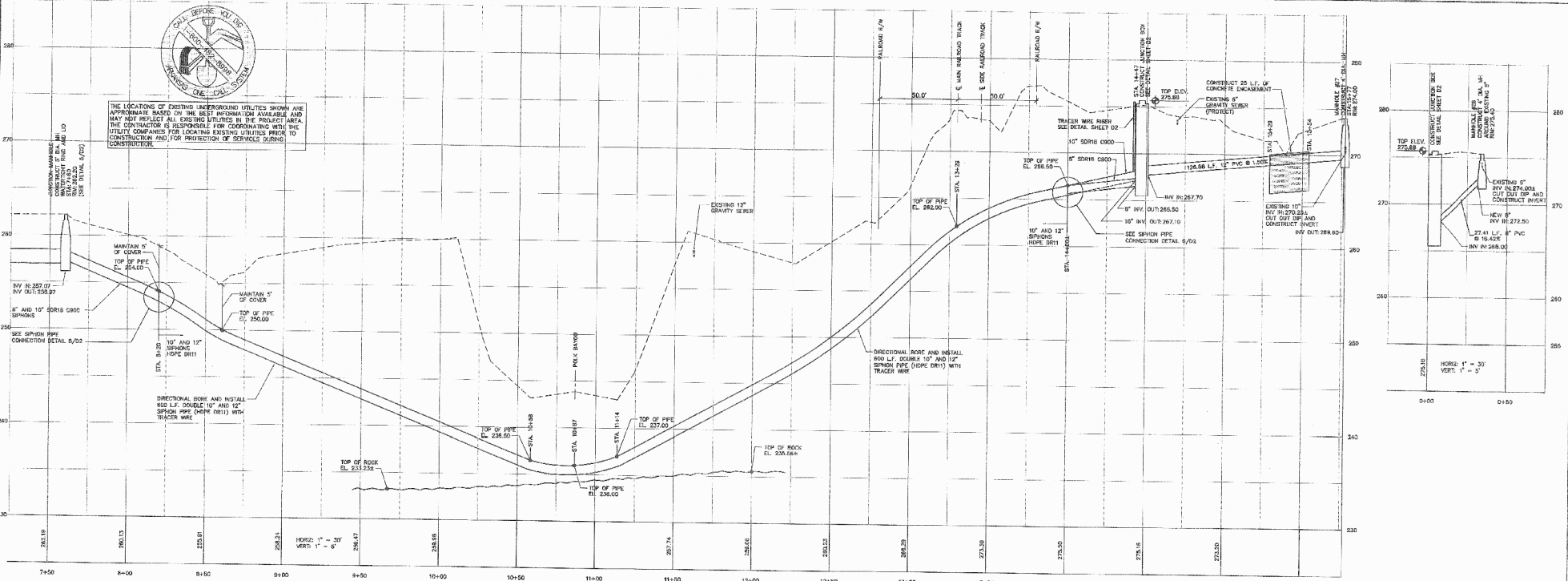
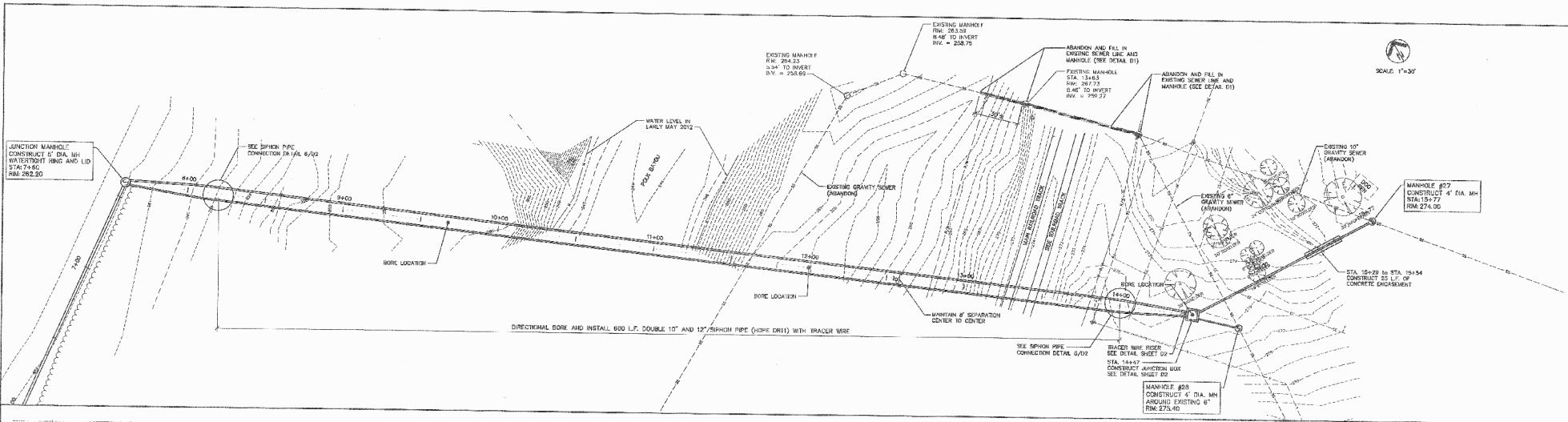
REV	DATE	BY	DESCRIPTION



DESIGN: RC
 DRAWN: ELH
 PLAN NO: BA138B51
 McGoodwin Williams & Yates
 Engineering Confidence
 © 2012 McGoodwin, Arkansas

SANITARY SEWER REHABILITATION
 BATESVILLE, ARKANSAS
 POLK BAYOU SEWER LINE
 STA. 0+00 TO 9+00

Structure ID: C6



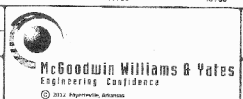
THE LOCATIONS OF EXISTING UNDERGROUND UTILITIES SHOWN ARE APPROXIMATE BASED ON THE BEST INFORMATION AVAILABLE AND MAY NOT REFLECT ALL EXISTING UTILITIES IN THE PROJECT AREA. THE CONTRACTOR IS RESPONSIBLE FOR COORDINATING WITH THE UTILITY COMPANIES FOR LOCATING EXISTING UTILITIES PRIOR TO CONSTRUCTION AND FOR PROTECTION OF SERVICES DURING CONSTRUCTION.

K:\BATES\BATES\138B\138B_CADD\138B_CADD.dwg, 02/06/2010 10:02:37 AM, 138B_11

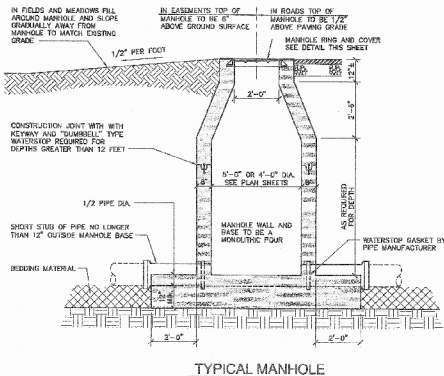
REV	DATE	BY	DESCRIPTION



PROJECT NO.
BA138B51

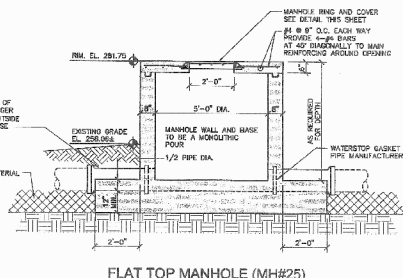


SANITARY SEWER REHABILITATION
BATESVILLE, ARKANSAS
POLK BAYOU SEWER LINE
STA. 9+00 TO 15+77
SHEET NO. **C7**

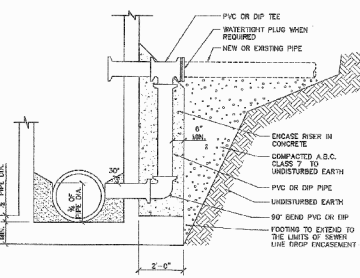


TYPICAL MANHOLE

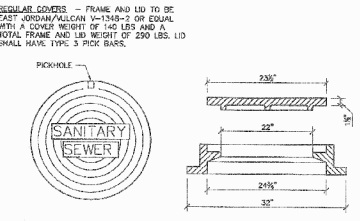
1 CAST IN PLACE MANHOLE DETAIL
3/8" = 1'-0"



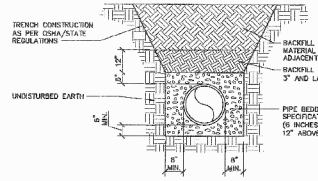
FLAT TOP MANHOLE (MH#25)



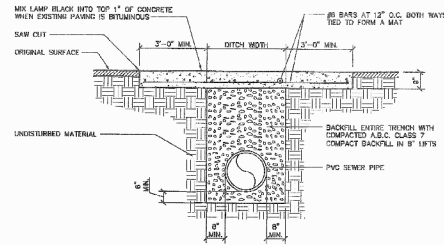
2 SEWER LINE DROP ASSEMBLY DETAIL
3/8" = 1'-0"



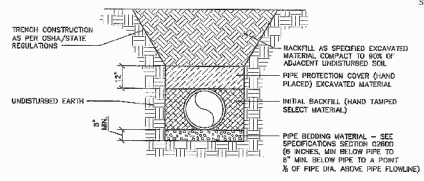
3A TYPICAL MANHOLE RING AND COVER DETAIL
NOT TO SCALE



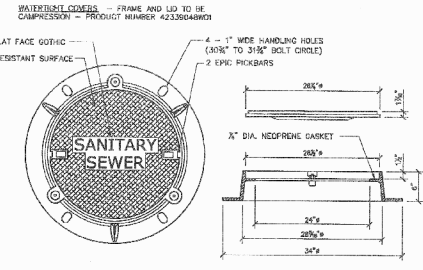
4 UNPAVED AREAS
PVC PIPE BEDDING AND COVER DETAIL
NOT TO SCALE



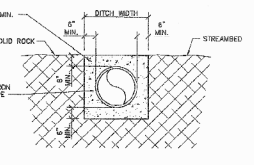
5 STREET CROSSING
PVC PIPE BEDDING AND COVER DETAIL
NOT TO SCALE



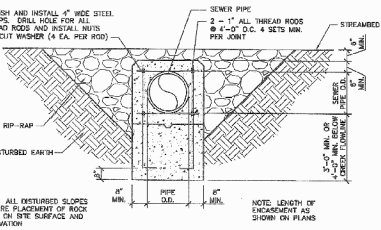
6 UNPAVED AREAS
DUCTILE IRON PIPE BEDDING AND COVER DETAIL
NOT TO SCALE



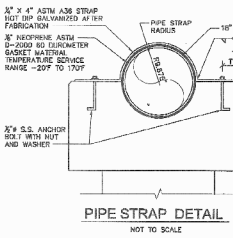
3B WATERTIGHT MANHOLE RING AND COVER DETAIL
NOT TO SCALE



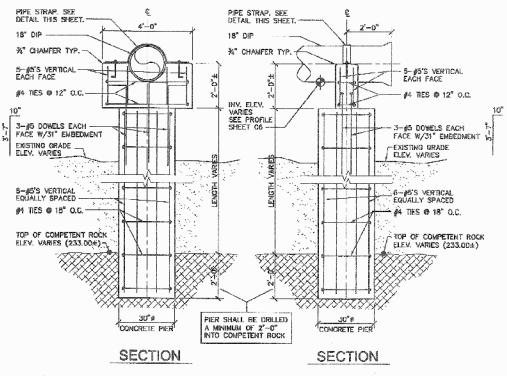
7 CONCRETE ENCASEMENT
SOLID ROCK TRENCH DETAIL
@ STREAM CROSSING
NOT TO SCALE



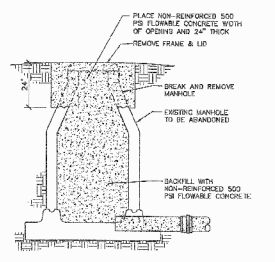
8 CONCRETE ENCASEMENT
NO SOLID ROCK TRENCH DETAIL
@ STREAM CROSSING
NOT TO SCALE



PIPE STRAP DETAIL
NOT TO SCALE

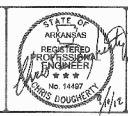


9 CONCRETE PIER DETAIL
3/8" = 1'-0"



10 ABANDON EXISTING MANHOLE DETAIL
NOT TO SCALE

REV	DATE	BY	DESCRIPTION



DESIGNED: RC
DRAWN: ELH
PROJECT NO: BA138B51
McGoodwin Williams & Yates
ENGINEERING ARCHITECTS
2012 Fayetteville, Arkansas

SANITARY SEWER REHABILITATION BATESVILLE, ARKANSAS	STRUCTURE NO:
SANITARY SEWER DETAILS	DRAWING NO: D1

